



**AVAILABLE SF:** Suite 100 - 1,059 SF  
Suite 103 - 913 SF  
Suite 300 - 8,931 SF

**LEASE RATE:** \$18.50 Plus Electric

**BUILDING SIZE:** 41,246 SF

**YEAR BUILT:** 2007

**ZONING:** Commercial/Office

**CROSS STREETS:** 309 North / Crackersport Rd.

## PROPERTY OVERVIEW

1320 Hausman Road is located in South Whitehall Township with easy access to Routes 309 and 22, I78 and the PA Turnpike. This Class A, multi-tenant office building, with a park-like setting, has ample parking and gorgeous space with great fit-out options. Offering an ideal location and convenient lease terms for new and growing businesses and professional practices with one to one hundred employees.

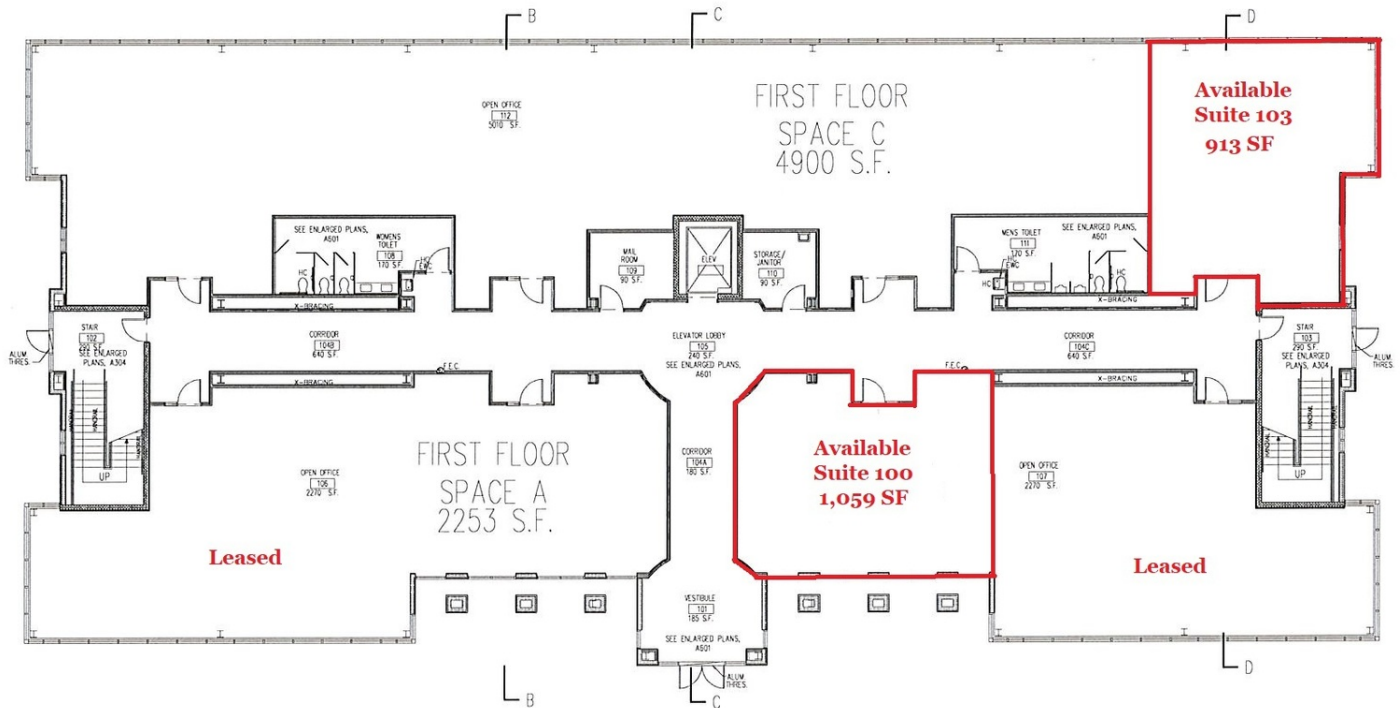
## PROPERTY FEATURES

- 1,128 SF open floor plan with conference room available on first floor
- 913 SF office with conference room available on first floor
- 8,931 SF available on third floor - can be sub-divided and furnished, if desired
- Floor to ceiling windows, security & access control
- Close to various area amenities

**CINDY MCDONNELL FEINBERG**  
cfeinberg@feinbergrea.com  
Cell: 610.360.9733  
1 Direct: 610.709.6233



## Suite 103 - 913 SF

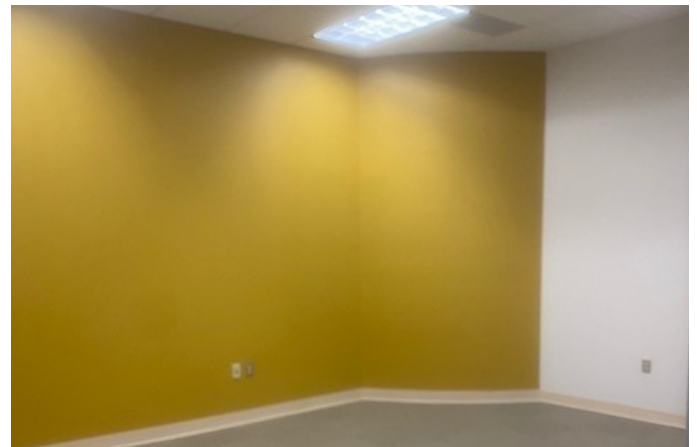


SPACE	SPACE USE	LEASE RATE	LEASE TYPE	SIZE (SF)	AVAILABILITY
Suite 100	Office	\$18.50	Plus electric	1,059 SF	Vacant
Suite 103	Office	\$18.50	Plus electric	913 SF	Vacant

**CINDY MCDONNELL FEINBERG**  
 cfeinberg@feinbergrea.com  
 Cell: 610.360.9733  
 2 Direct: 610.709.6233



## Suite 100

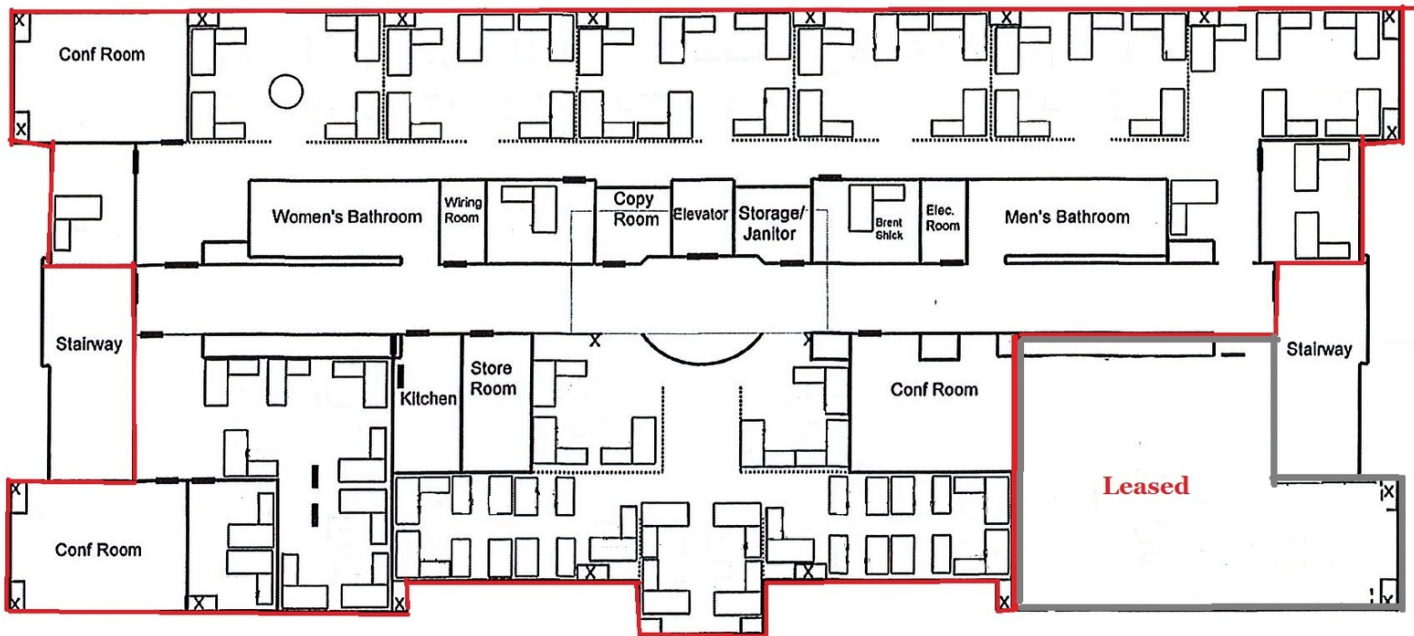


**CINDY MCDONNELL FEINBERG**  
cfeinberg@feinbergrea.com  
Cell: 610.360.9733  
3 Direct: 610.709.6233





## Suite 300

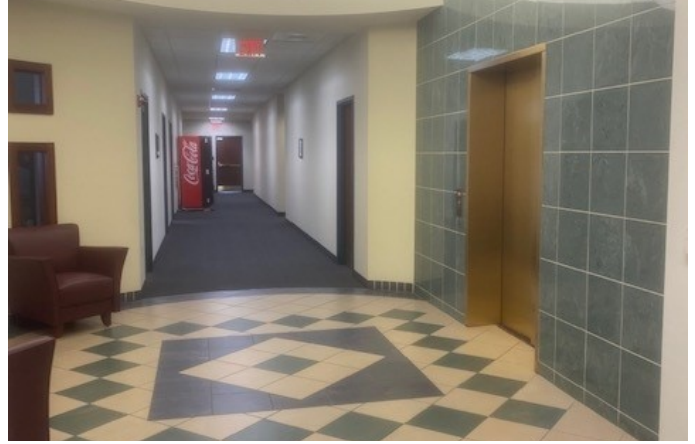


SPACE	SPACE USE	LEASE RATE	LEASE TYPE	SIZE (SF)	AVAILABILITY
3rd Floor	Office Building	\$18.50	plus electric	8,931 SF	VACANT

CINDY MCDONNELL FEINBERG  
 cfeinberg@feinbergrea.com  
 Cell: 610.360.9733  
 Direct: 610.709.6233



## Suite 300

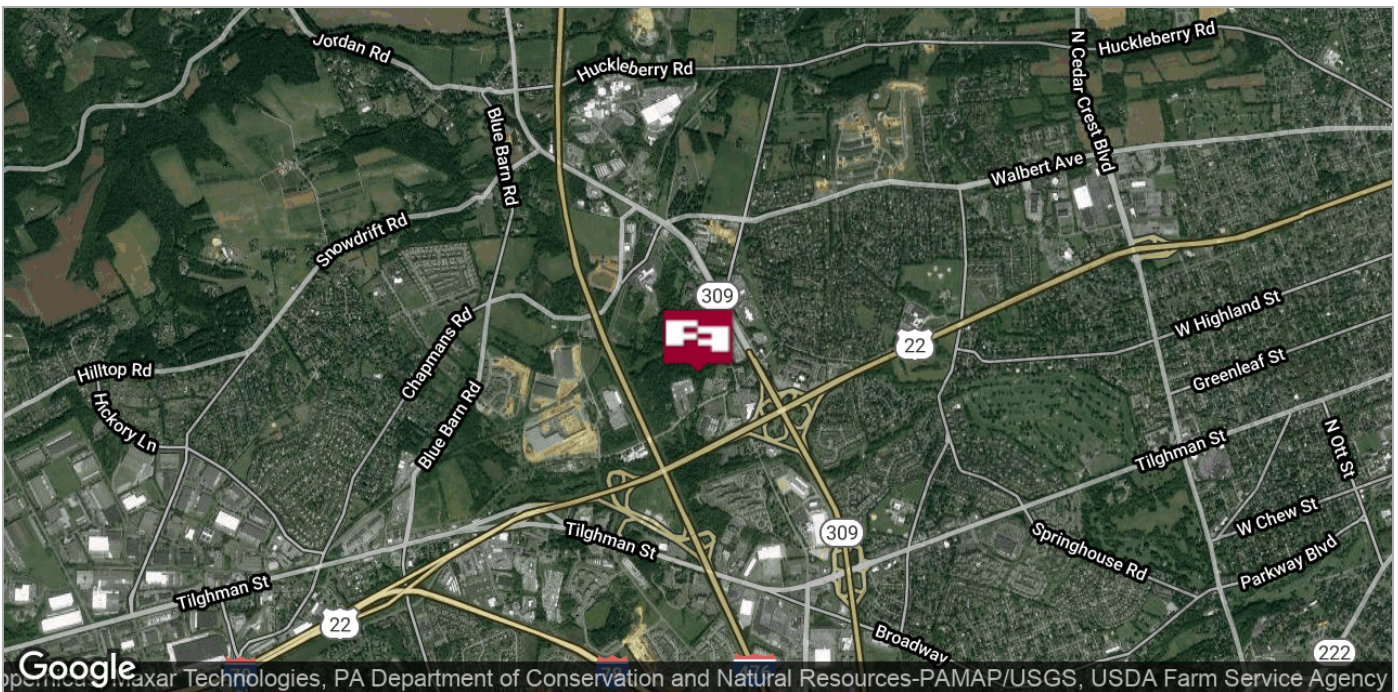


**CINDY MCDONNELL FEINBERG**  
cfeinberg@feinbergrea.com  
Cell: 610.360.9733  
5 Direct: 610.709.6233





## Location Maps



**CINDY MCDONNELL FEINBERG**  
cfeinberg@feinbergrea.com  
Cell: 610.360.9733  
6 Direct: 610.709.6233

